

Northampton Borough, Pa



See part of historic 9-19-1737 walking purchase & farming to cement making at our Atlas Museum.



Atlas cement is part of the Panama Canal construction, the Empire State Building, major dams, and highways. Come for an Atlas Museum tour with pictures, sounds, quotes and story-telling, all a part of our Atlas Museum.

Atlas Cement Memorial Museum – The Atlas Cement company, employed over 5,000 workers. It was located in Northampton Borough. We are proud of our cement history – our school motto is the “Koncrete Kids.”

- We celebrate the ancestry, culture, and involvement of Atlas employees who came mostly from Eastern Europe. We tell their story and the cement making story at our Atlas Museum.
- The museum is located at 1401 Laubach Avenue adjacent to our Northampton Borough Municipal Administration Building.
- **Admission is free.**
- The museum is barrier free and accessible during normal business hours as well as special narrated, guided tours the second and fourth Sundays from 1:00 PM to 3:00 PM Sundays from May 13th to September 23rd. Visit online <https://www.northamptonboro.com> click “more” & “Atlas Museum”

Northampton Borough Farmers Market

- We advocate healthy living via fresh locally grown food. Our farmers and craft vendors tell their stories.
- The market is across the street from the museum and Borough Administration office at 1401 Laubach Ave.
- We are open from 3:00 to 6:30 PM Tuesdays from mid-May to Mid-September. Come visit and share stories and/or “like us” on Facebook at [Northampton Pa Farmers' Market](#). Find us on Smith Lane at Laubach Ave.
- We provide entertainment & technology exhibits by Northampton Area School Students. We also display antique vehicles as part of our story telling.

Visit our Siegfried Museum in an historic train station - Northampton, Pa

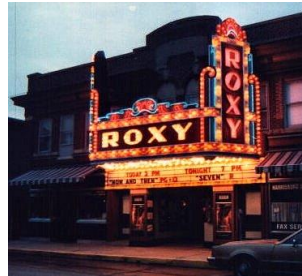


NORTHAMPTON AREA HISTORICAL SOCIETY SIEGFRIED TRAIN STATION

- This Victorian-era station served the Central Railroad of New Jersey for many years until passenger service was discontinued in 1945. This station is aside the rails on 21st St.
- The village of Siegfried was named after Revolutionary War hero Col. John Siegfried who owned a tavern there.
- The village was incorporated into the Borough of Alliance (later renamed Northampton) in 1901, but the station retained its original name throughout history.
- The building was completely restored in 1976 by the Northampton Historical Society and now serves as their home base. www.facebook.com/NorthamptonAreaHistoricalSociety

Visit our historic Roxy

Theatre - located at 2004 Main Street Northampton, PA. This is a great theatre to see the best movies, an occasional live show and a step back in time. Matinee showings during the day are a Summer feature. Come or call 610-262-7699



<http://roxytheaternorthampton.com> The Roxy Theatre owner has accommodated picture taking by local antique car, truck, and motorcycle owners. Some of these vehicles also occasionally appear at the Northampton Farmers Market.